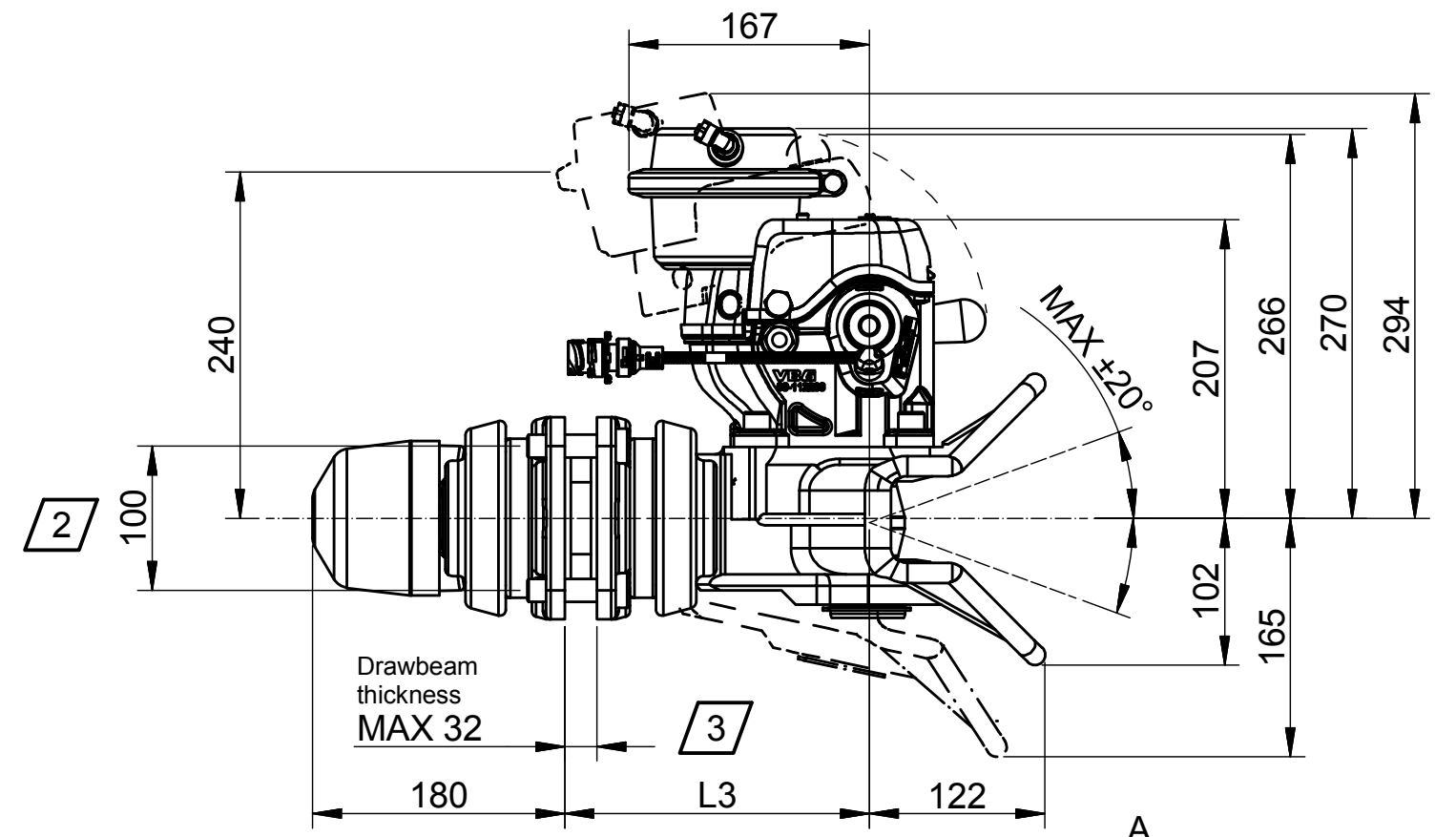
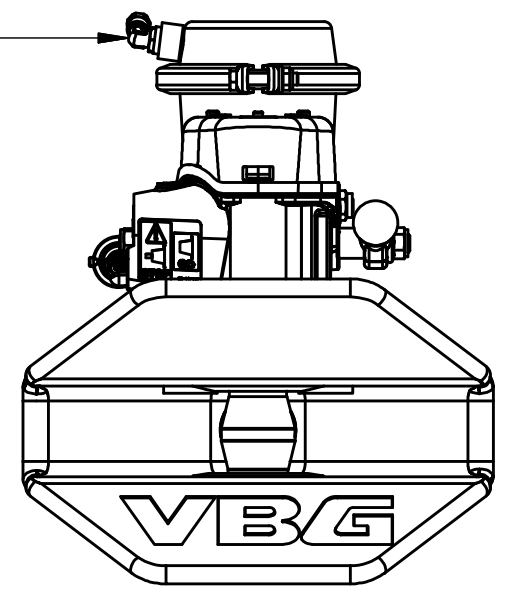
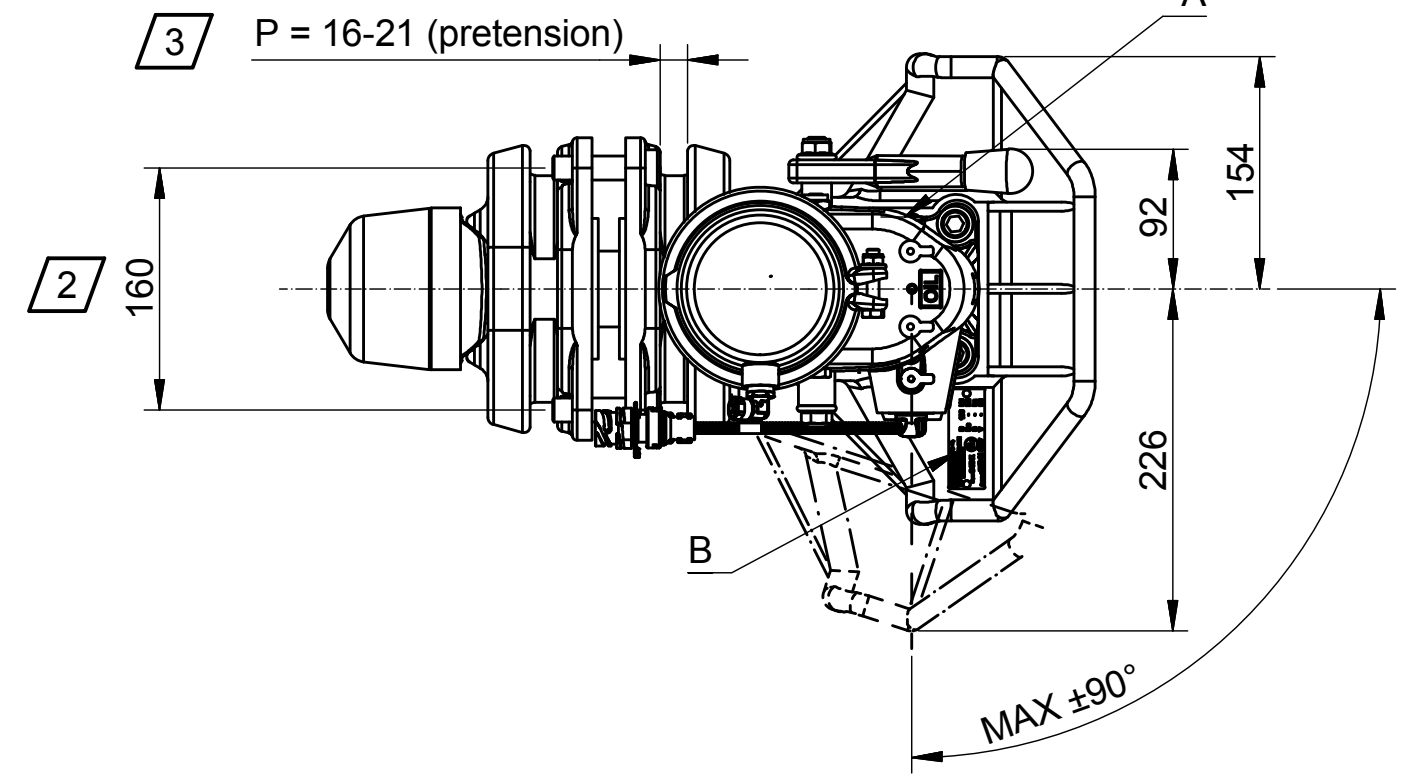


- Operation alternatives:**
1. Valve box
  2. C-connector
  3. Palm connector
  4. Duomatic connector



**3** Coupling center distance "L3" depends on pretension and drawbar thickness (see table).

Drawbeam thickness	L3	
	P=16	P=21
16	204	209
20	208	213
22	210	215
28	216	221
30	218	223
32	220	225



**2** Measures for information only. Tolerance ±10mm.

**1** Mounting dimensions acc. to ISO 3584:2001 category 5-7.

**VBG**

TYPE 8500 AM

PART 09-187900

NO. NO.YEAR/WEEK

VBG GROUP TRUCK EQUIPMENT AB

**VBG** VBG Group AB, Sweden

Type: 8500 AM Part: 09-0311

No: XXXXXX XXXX

Class: C 50-X **E4**

Approval: 55R-01 0067

D	190	kN
Dc	-	kN
S	-	kg
V	-	kN

**EXTERNAL DISTRIBUTION**

**VBG GROUP**

Description Coupling VBG 8500 AM Koppling VBG 8500 AM	Modified Date	2016-02-01	Modified by	HB	Modification No.	12613	Issue	g
	3D Model No.	09-031150		Engineer	Checked by	KP		
	Sheet Size	A3	Scale	1:5	Projection	Drafting Date	2006-04-09	
	Stage	P		Drawing No.	09-031150 (F) INFO			
This drawing is the property of VBG Group AB and is protected in accordance with prevailing law. Changes must be made in CAD-program, this concerns both 2D & 3D.								